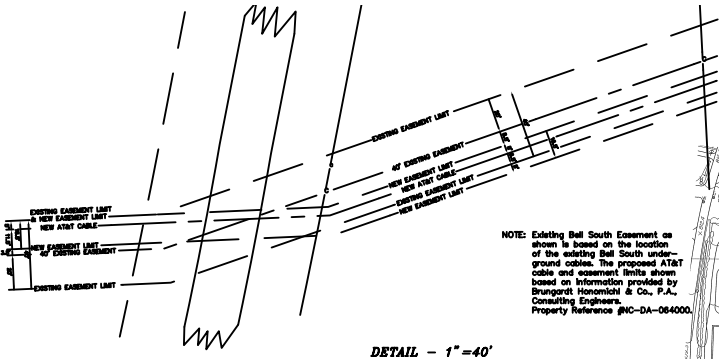
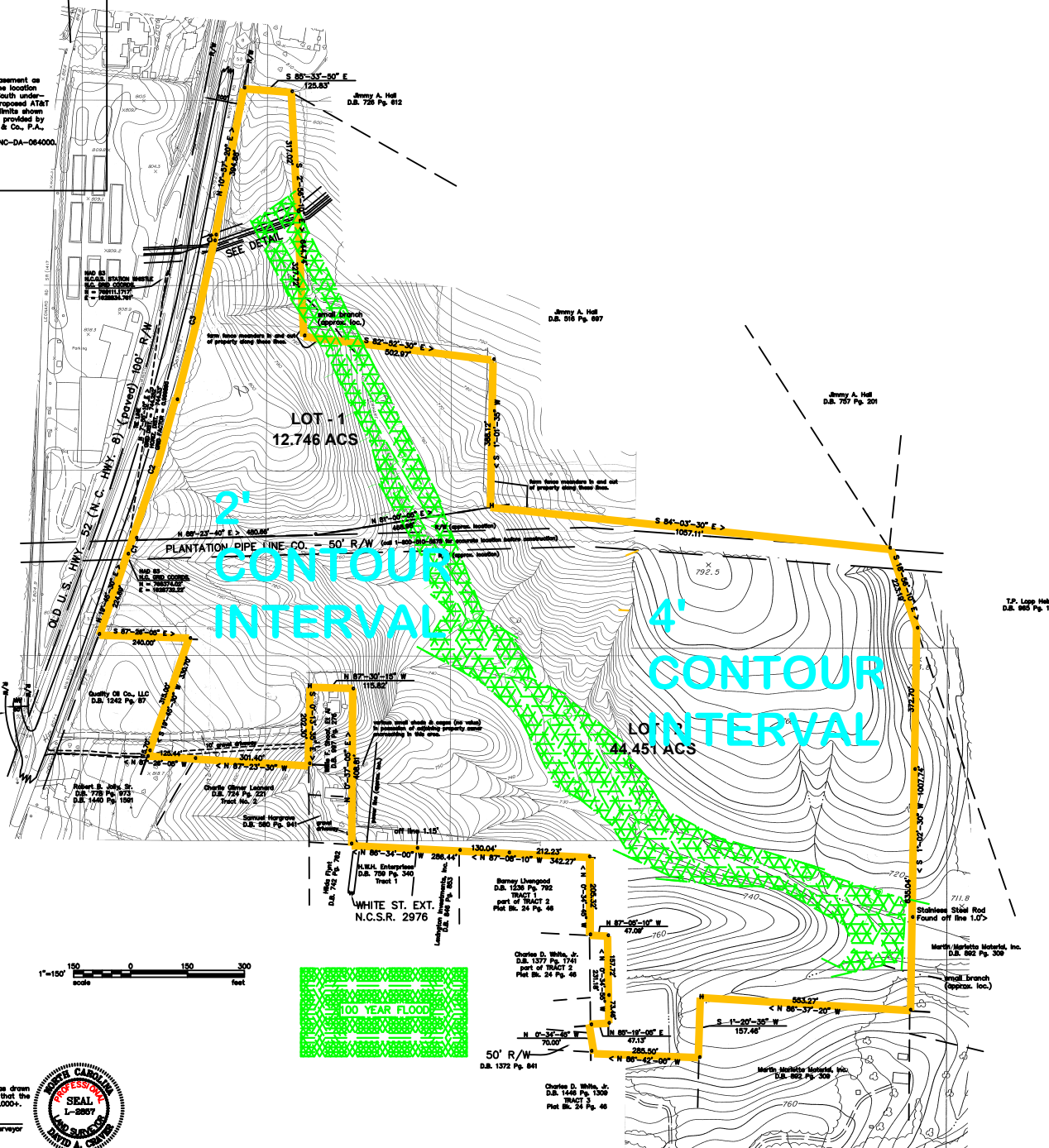


Curve	Radius	Chord Bearing and Distance	Arc Length	Tangent	Delta
C1	5667.77'	N 19°-36'-10" E 40.77'	40.77'	20.39'	0°-24'-45"
C2	5667.77'	N 17°-36'-30" E 388.65'	388.72'	183.44'	3°-54'-35"
C3	5667.77'	N 17°-18'-35" E 430.78'	430.86'	218.54'	4°-21'-20"
C4	5667.77'	N 11°-03'-15" E 15.43'	15.43'	7.72'	0°-09'-20"



DETAIL - 1"=40'

NOTE: Existing Ball South Easement as shown is based on the location of the existing Ball South underground cables. The proposed AT&T cable and easement limits shown based on information provided by Brangert Homelink & Co., P.A., Consulting Engineers.
Property Reference #NC-DA-064000.



2'
CONTOUR
INTERVAL

4'
CONTOUR
INTERVAL

100 YEAR FLOOD

LEONARD RD. (paved)
N.C.S.R. #1417
60' R/W

WHITE ST. EXT.
N.C.S.R. 2976



I certify that this plot was drawn from a field survey, and that the ratio of reduction is 1:10,000.
N.C. Professional Land Surveyor
L-2887
Lic. No.

- NOTES:
- No liability is assumed by the undersigned for any loss resulting from the exercise of any governmental agency affecting the use of the premises or any loss resulting in any matter that might be discovered by an abstract or title search of the property.
 - Deed reference D.B. 1759 Pg. 1611.
 - Total area surveyed = 57.197 acres.

T.P. Loop Hole
D.B. 965 Pg. 195

Martin/Marotta Metals, Inc.
D.B. 892 Pg. 308

Barney Lempood
D.B. 1236 Pg. 792

Charles D. White, Jr.
D.B. 1372 Pg. 841

Charles D. White, Jr.
D.B. 1372 Pg. 841

Charles D. White, Jr.
D.B. 1372 Pg. 841

Charles D. White, Jr.
D.B. 1372 Pg. 841

Charles D. White, Jr.
D.B. 1372 Pg. 841

Charles D. White, Jr.
D.B. 1372 Pg. 841

Charles D. White, Jr.
D.B. 1372 Pg. 841

Charles D. White, Jr.
D.B. 1372 Pg. 841

Charles D. White, Jr.
D.B. 1372 Pg. 841

Charles D. White, Jr.
D.B. 1372 Pg. 841